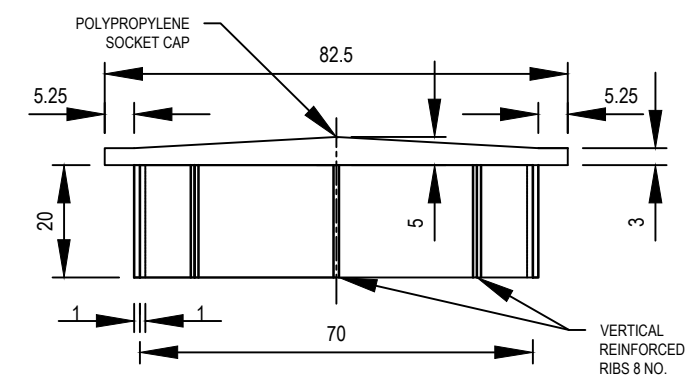
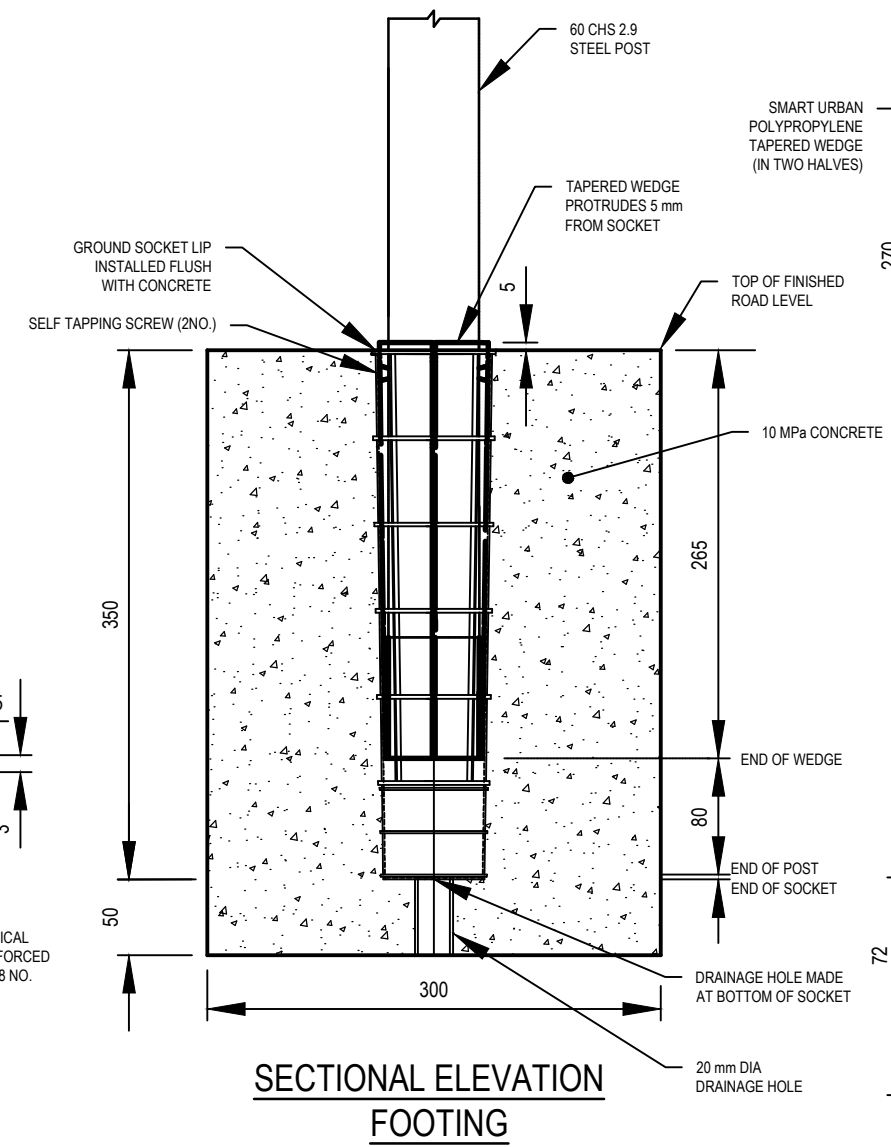


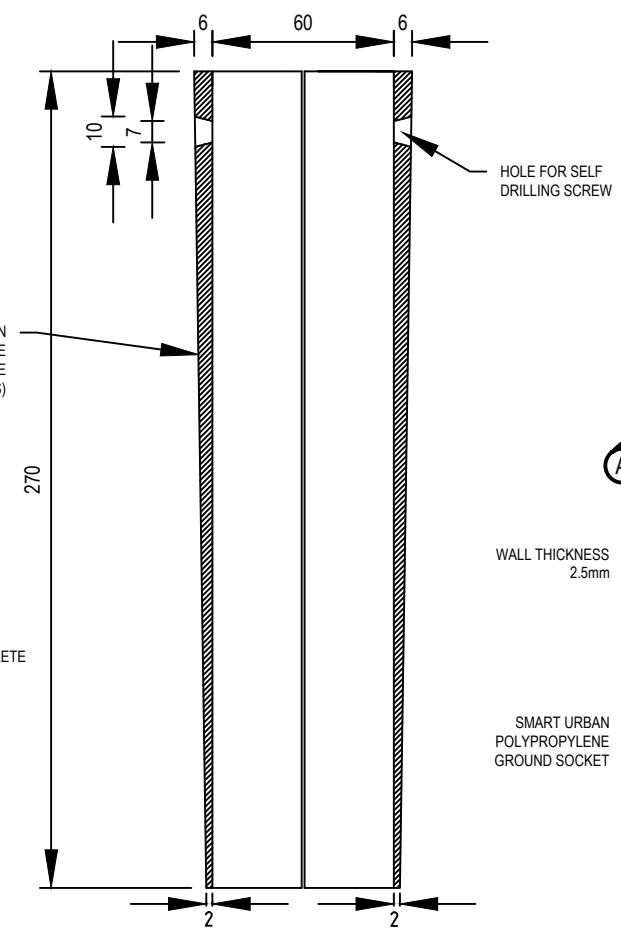
BOLLARD



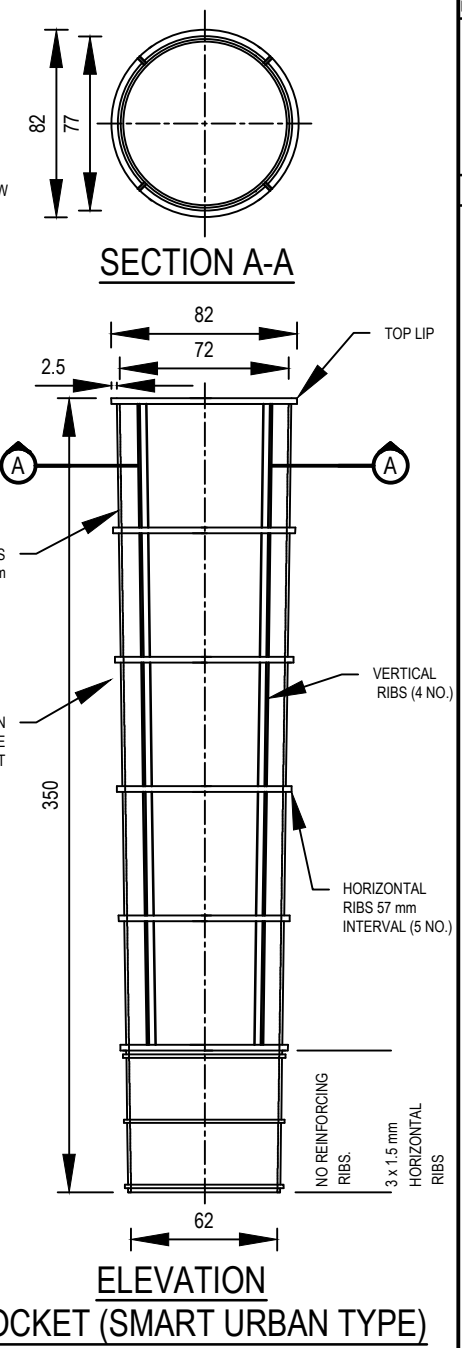
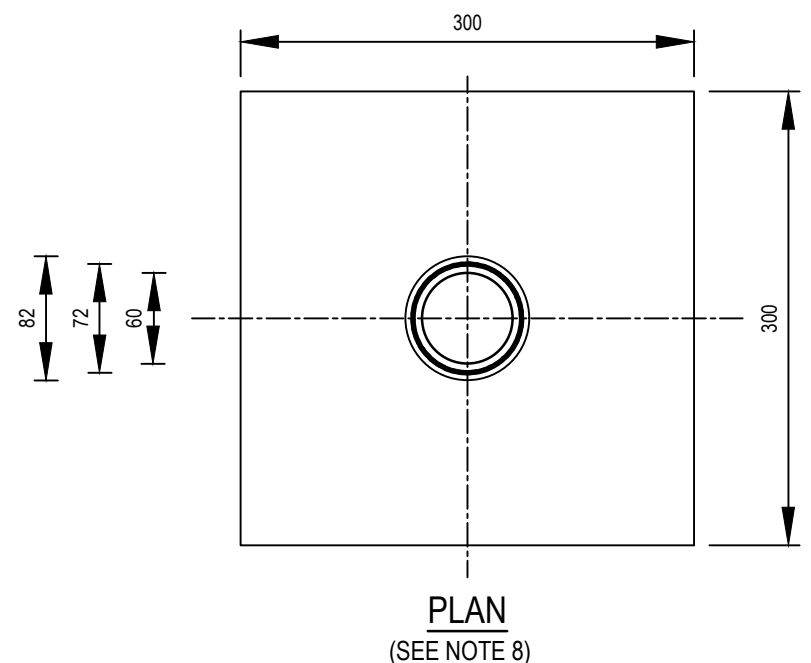
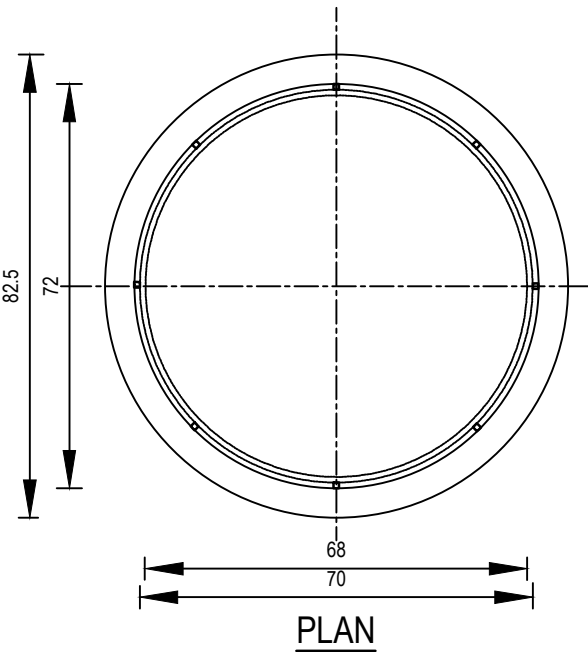
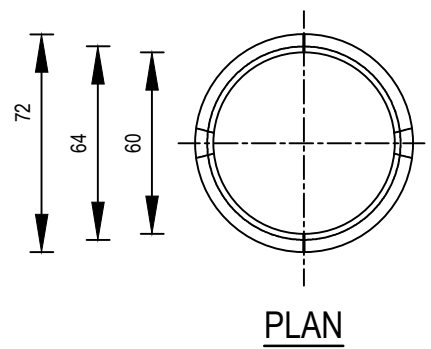
ELEVATION SOCKET CAP



SECTIONAL ELEVATION FOOTING



SECTIONAL ELEVATION WEDGE (SMART URBAN TYPE)



ELEVATION SOCKET (SMART URBAN TYPE)

AMENDMENTS		
No.	DESCRIPTION	APPROVED & DATE
2.	20mm DIA DRAINAGE HOLE ADDED.	T. FREEMAN 06/05/14
3.	CHANGE AUSPOSTS TO SMART URBAN AMENDED.	
3.	TITLE BLOCK AND FONT UPDATED. MOVED NOTES TO TITLEBLOCK.	C. Mariano 9/11/23

- NOTES**
- SMART URBAN REMOVABLE BOLLARDS TO BE INSTALLED TO MANUFACTURER'S SPECIFICATIONS AND THIS DRAWING.
 - HEIGHT OF BOLLARD TO BE 900 mm ABOVE FINISHED ROAD LEVEL UNLESS OTHERWISE SPECIFIED IN THE DESIGN DRAWINGS.
 - THE SPACING OF BOLLARDS SHOULD BE IN ACCORDANCE WITH THE DESIGN DRAWINGS. THE SOCKETS SHOULD BE CAPPED WHEN NOT USED.
 - BOLLARDS AND METAL CAPS SHALL BE COVERED WITH EXTERIOR GRADE LEAD FREE POLYESTER POWDER COAT.
 - THE FINISHED COLOUR AND SPECULAR GLOSS VALUE SHALL BE EQUIVALENT TO GOLDEN YELLOW Y14 AS SPECIFIED IN AS2700.
 - ALL DIMENSIONS IN MILLIMETERS.
 - AS AN ALTERNATIVE TO THE 300X300X400 mm DEEP CONCRETE FOOTING, THE FOOTING MAY BE BORED USING A 350 mm DIA. AUGER TO GIVE CYLINDRICAL 400 mm DEEP FOOTING

3

3

<p>PLANNING AND TECHNICAL SERVICES DIRECTORATE ROAD AND TRAFFIC ENGINEERING BRANCH Waterloo Crescent EAST PERTH 6004 Telephone 138 138</p>	
DRAWN	SOORI K. KASIRI 29/04/14
DESIGNED	SOORI K. KASIRI 29/04/14
VERIFIED	D. LANDMARK 26/06/08
APPROVED	R. GROVE 26/06/08
FILE NO.	13/4330

STANDARD DRAWING
REMOVABLE BOLLARDS
FOR USE ON ROADS UP TO 110 km/h

SCALES N.T.S. A 3